

WM *The Boulevard* WEST OF NINTH

To:

Erin Simmons, Director, Design Assistance
The American Institute of Architects
1735 New York Avenue, NW
Washington, DC 20006-5292

By:

Sam Watkins, Jr.
President & CEO
Louisville Central Community Centers, Inc.
1300 W. Muhammad Ali Blvd.
Louisville, KY 40203
(502) 583-8821
swatkins@lccnews.org

With Technical Assistance from:

Jared Kaelin, MLA candidate (2015)
Department of Landscape Architecture
College of Design, NC State University
8100 Green Lantern Street
Raleigh, NC 27613
502.417.2246
jrkaelin@ncsu.edu

Kofi Boone, Associate Professor
Department of Landscape Architecture
College of Design, NC State University
Campus Box 7701/200 Brooks Hall
Raleigh, NC 27695-7701
919-515-8349
kmboone@ncsu.edu

Submitted: December 5, 2014

Summary _____	1
Community Description _____	2
Problem Statement & Issues _____	4
Objective _____	7
Steering Committee _____	8
Budget & Funding _____	10
Educational Partners _____	11
Communication & Media _____	14
SDAT Project Time-line _____	15
Partnerships & Support _____	16
Supplemental Documents _____	23

Louisville, Kentucky: West of Ninth [TheBoulevard]

Applicant

Sam Watkins, Jr.
President & CEO
Louisville Central Community Centers, Inc.
1300 W. Muhammad Ali Blvd.
Louisville, KY 40203
(502) 583-8821
swatkins@lcccnews.org

Technical Assistance to LCCC

Jared Kaelin, MLA candidate (2015)
Department of Landscape Architecture
College of Design, NC State University
8100 Green Lantern Street
Raleigh, NC 27613
502.417.2246
jrkaelin@ncsu.edu

Technical Assistance to LCCC

Kofi Boone, Associate Professor
Department of Landscape Architecture
College of Design, NC State University
Campus Box 7701/200 Brooks Hall
Raleigh, NC 27695-7701
919-515-8349
kmboone@ncsu.edu

The West of Ninth SDAT proposal invites diverse design, planning, and sustainable community development professionals to join with Louisville community partners in a community engaged process for determining strategic development decisions in the near term. West of Ninth, the home of Muhammad Ali, is a historically African American community near downtown. While other near downtown communities are experiencing significant reinvestment, West of Ninth remains a community working through the challenges of socio-economic decline.

West of Ninth possesses rich assets including historic urban fabric, anchoring institutions, and engaged community organizations. A recent partnership with the Department of Landscape Architecture at the University of Kentucky produced the West of Ninth Vision Plan; a forward looking conceptual framework describing the possibilities for the area becoming a sustainable community with significant growth in housing, education, employment, cultural amenities, mobility options, and green infrastructure. The Vision Plan has captured the attention of the city of Louisville and expanded the visibility of its sponsoring organization.

Since the creation of The Vision Plan, the sponsoring organization has put forth many efforts (listed below), and Louisville Metro Housing Authority, along with LCCC and scores of other stakeholders submitted a Choice Neighborhood grant to the Department of Housing & Urban Development for \$500,000 to develop transformational planning for its Beecher Terrace Public Housing development and the Russell neighborhood. A decision is expected at the first of the 2015 year. These major initiatives have the opportunity to catalyze sustainable community revitalization, and also support a strategy for future investment. This SDAT proposal invites design and planning professionals to engage the community at this critical stage and help partners connect broader development goals to opportunities to strengthen the built environment of West of Ninth. This includes responding to the area's rich cultural heritage and historic building stock, conceptualizing alternatives for the city's new housing proposal that strengthen West of Ninth and catalyze further community growth, land use and mobility strategies that strengthen connections to downtown Louisville, and sustainable approaches to establishing green infrastructure in the area. Additionally, the community prioritizes urban design strategies that create educational, skills development, and entrepreneurial opportunities for the current residents of West of Ninth.

Recent Developments:

Louisville Central Community Centers, Inc. (LCCC) is leading many of the efforts to recreate a vibrant Russell neighborhood, having invested more than \$10 million to help generate jobs in West Louisville and to revitalize the Old Walnut Street Development - a multi-purpose commercial, cultural and family service hub, and home to their central offices.

LCCC will be investing an additional \$2 million over the next few years to expand their headquarters. This expansion will include an on-campus Family Strengthening Center, a full-service restaurant and the Grand Lyric Theater.

Joshua Tabernacle Missionary Baptist Church has committed a portion of the property that affronts Muhammad Ali Blvd. at 15th Streets for planning purposes consistent with the West of Ninth visioning Project.

The African American Heritage Center at 18th and Muhammad Ali would like to move forward with the planning for the Muhammad Ali Park that will represent the front entrance to its heritage center.

Community Ventures Corporation has just announced the development of the old Jay's Restaurant at 18th & Muhammad Ali Blvd. There plans include establishing a catering hub to support fledging food service businesses.

Summary



Louisville, Kentucky: West of Ninth [TheBoulevard]

For decades, the residents west of Ninth Street in Louisville have not been included in critical planning efforts geared towards the revitalization of downtown and nearby neighborhoods. This pattern continued until the vision for West of Ninth, a response to Mayor Greg Fischer's call for new ideas to support the Vision Louisville initiative, was set in motion by Louisville Central Community Centers, Inc. and the University of Kentucky, Department of Landscape Architecture for a better community west of Ninth Street.

There is a rich history attached to the "West End" in Louisville and for far too long a disinvestment in west Louisville. Muhammad Ali Boulevard, formerly Walnut Street is a central artery connecting the central business district to west Louisville, running east to west. Anyone from Louisville living east of Downtown admittedly knows, "Don't go west of Ninth Street."

Due to Louisville's history of segregation, many black families were not openly welcome in Louisville's 1940's and 1950's main artery of shopping and local amenities in Downtown, Fourth Street. Walnut Street became the main artery for the black community. Concentrated along Walnut Street between Sixth and Thirteenth Streets were vibrant clubs, entertainment establishments including theaters, restaurants, groceries, doctor and law offices. However, in 1957 when Louisville voted in a \$5 million bond issue for urban renewal, this entertainment and business district was a target and removed in the 1960's.

As a result of losing significant urban fabric and socio-economic policies, the area went into decline. Since the 1960's both white and black populations have declined and the "West End" became an area with crime, drug abuse, and lack of economic opportunities.

Another key event shaping the history of west Louisville was the Great Flood of 1937. This was the worst local flood recorded in history which left west Louisville under water. West Louisville remained above flood stage for 23 days devastating the families and business located in west Louisville.

But there is hope for west Louisville including community assets and anchoring institutions with a drive to pour back into the community. These assets include new home developments along Muhammad Ali Boulevard with homes valuing up to \$300,000, historic churches, community facilities like the African American Heritage Center and Louisville Central Community Centers, a newly developed YMCA, numerous educational programs, and many more.

The following page graphically explains population figures, demographics and a look into some socio-economic numbers comparing west Louisville to a similar populated area(s) located in east Louisville.

Community Description



West Louisville | East Louisville

Median Income



\$21,733

\$59,600

Median Home Value

\$66,977

\$229,623

Vacant

22%

09%

Population

61,251

68,523

African American 79%

African American 04%

White 18%

White 91%

Unemployment

13.4%

3.9%



Businesses

Supermarkets

5

9

Banks

13

45

Pharmacies

6

21

Hospitals

0

6

Pediatric Physicians

11

73

OB/GYN Physicians

3

148

Dentists

55

188

Attorneys

6

157

Veterinarians

1

25

Restaurants

30

255

Coffee Shops

1

16

Bakers

3

20

Liquor Stores

24

18

Clothing Stores

12

53

Movie Theaters

0

2

Hotels/Motels

0

7

Barbershops

26

9

Beauty Salons

36

117

total 1,856

total 6,352

Community Description

Louisville, Kentucky: West of Ninth [TheBoulevard]



The Study area for West of Ninth is west Louisville located just west of Downtown Louisville. The specific area of focus is highlighted green in the image above, this is Muhammad Ali Boulevard from Ninth Street to 21st Street. The area in blue is the designated central business district, Downtown Louisville.

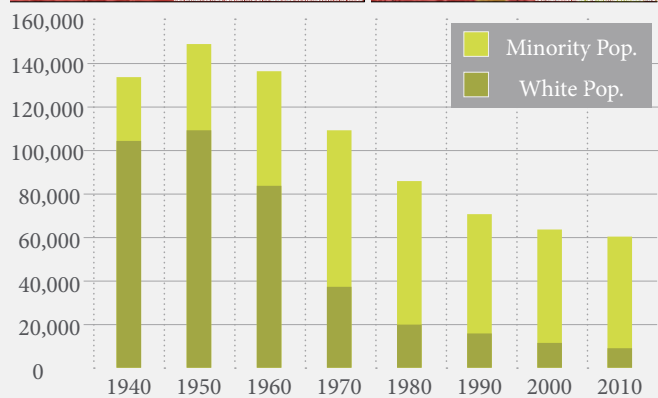
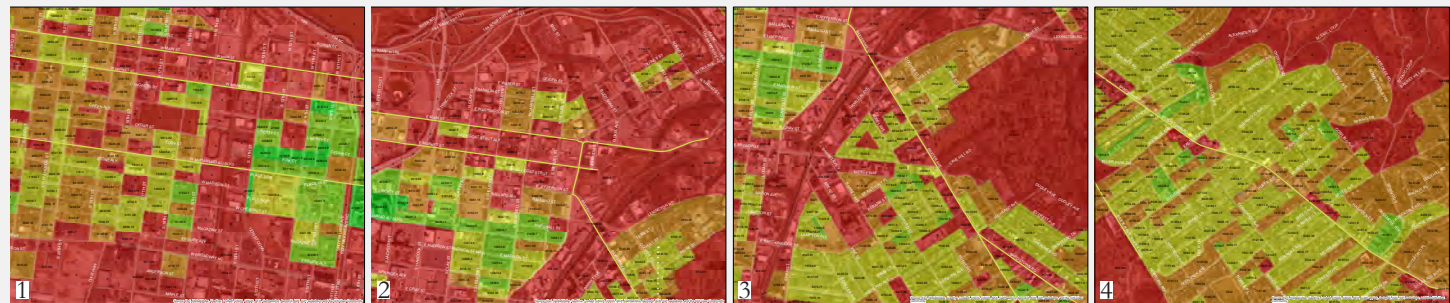
Barriers to Success: For the longest time Louisvillians recognized 9th Street as a physical barrier separating the east end from the west end, “the Wall at Ninth Street.” Beyond this barrier are stories of drug abuse, criminal activity, and minimum economic expansion. As mentioned in the community description these neighborhoods in west Louisville have been ignored for years. The residents West of Ninth have limited access to necessary amenities such as grocers, professional offices, and safe interconnected neighborhoods.

There is little to no disposable income in west Louisville. Very seldom does the west end get visitors from the east end isolating West of Ninth from many opportunities. The project study area is located directly next to the central business district which is continually growing eastward and has been for many years. This is limiting the growth and opportunity that is missing from West of Ninth socially and economically. Many have advocated for a revitalized west Louisville for the families and residents there in order to support a vibrant community where success is not the exception but the norm. Poverty has engulfed these western neighborhoods and it is time for a transformational change.

Problem Statement & Issues



Louisville, Kentucky: West of Ninth [TheBoulevard]



The quality of life in west Louisville has been declining for years partly due to a concentration of poverty and a decline in population out of the west end. The above images depict population density from four selected areas across Louisville. One of our study area and the other three from the east end (areas included in the demographics from the community description section of this application).

Population and statistical data was referenced from 2007 - 2011 U.S. Census Bureau's American Community Survey, GIS, Kentucky Geography Network: Geoportal, ReferenceUSA, and information published in Louisville Magazine, March 2013.

Problem Statement & Issues



Louisville, Kentucky: West of Ninth [TheBoulevard]

Scope of Issues: Physically/Environmentally, West of Ninth's vision includes a connection to place and an association between people and landscape. Right now, Louisvillians outside of west Louisville and even residents west of Ninth Street perceive west Louisville as a broken community with a negative trajectory. Part of the barrier on Ninth Street includes public housing development Beecher Terrace. The vision of West of Ninth proposes to eliminate this development and Beecher Park for **open space creation** and the possibility of ultra-modern mixed income housing. The current situation throughout the corridor offers very little space for community and recreation. These potential spaces are currently taken by vacant properties and buildings of disrepair. **Transit and land use** is also relevant to West of Ninth due to its proximity to Downtown and the central business district. Connections between Downtown and even beyond could spark investment and initiative to create jobs and a vibrant commerce need within west Louisville.

Social, As mentioned, west Louisville is tragically hindered socially preventing **affordable housing, a sense of place,** and **educational** opportunities. **Public spaces** are uninviting and **pedestrian** safety is a concern. LCCC has invested in the community and exists to encourage and help families giving them a chance for success. They offer many programs including early childhood education, youth development, arts education and other after school programs, employment services and job training for adults, money management and home ownership, and many more. West Louisville is fortunate that an organization such as this is located in the heart of west Louisville.

Economic, West of Ninth is in need of **Revitalization.** With the help of the DAT we are hoping to create **jobs, public services,** and improve **public policy/planning.** Economic diversity is necessary in order to catalyze the energy behind revitalization of West of Ninth. Opportunities must be created for the residents of west Louisville helping to push the envelope sustaining economic wellbeing and sense of pride.

The West of Ninth SDAT proposal seeks partnership in developing strategies for:

Reviewing the West of Ninth Vision in the context of frameworks for equitable development.

Responding to the area's rich cultural heritage and historic building stock.

Conceptualizing alternatives for the city's new housing proposal that strengthen West of Ninth and catalyze further community growth.

Developing land use and mobility strategies that strengthen connections to downtown Louisville.

Forming sustainable approaches to establish green infrastructure in the area.

Creating educational, skills development, and entrepreneurial opportunities for the current residents of West of Ninth.

Louisville, Kentucky: West of Ninth [TheBoulevard]

The objective of the West of Ninth SDAT process is to use a community engaged process to uncover alternatives for using urban design, mobility, and green infrastructure to leverage the rich history of the area for sustainable community development. In particular, the process asks designers, planners, and community partners to consider how two near term investments can catalyze broader community revitalization in the context of the West of Ninth Vision Plan. The outcomes of the SDAT process could include tools for community decision making for these two near term investments, as well as strategies for future community investment and growth.

Objective



Louisville, Kentucky: West of Ninth [TheBoulevard]

Mr. Markham French, Director
Plymouth Community Renewal Center
1626 W. Chestnut St.
Louisville, KY 40203
(502) 583-7889

Rev. Dr. Jamesetta Ferguson, Sr. pastor
St. Peter's United Church of Christ
1407 W. Jefferson St.
Louisville, KY 40203
(502) 417-8438
stpeterucclou@yahoo.com

Dr. LaQuandra Nesbitt, MD. MPH., Director
Department of Public Health & Wellness
400 E. Gray Street
Louisville, KY 40203
(502) 574-6530

Gretchen Milliken
Director of Advancement
Louisville Metro Government
444 So. 5th Street
Louisville, KY 40202
Gretchen.Milliken@louisvilleky.gov

Mr. Tim Barry, Executive Director
Louisville Metro Housing Authority
420 South 8th Street
Louisville, KY 40203
Tim.Barry@louisvilleky.gov

Virginia Peck
Director of Housing
Louisville Metro Government
444 So. 5th Street
Louisville, KY 40202
Virginia.Peck@louisvilleky.gov

Dan Crutcher, Publisher
Louisville Magazine
137 W. Muhammad Ali Blvd. #101
Louisville, KY 40202
(502) 625-0100 #17
dcrutcher@loumag.com

Mr. Manfred Reid, Sr.
Chair, Louisville Metro Housing Authority
303 South 10th Street
Louisville, KY 40203
(502) 777-5453
Rhal5306@bluegrass.net

Rev. David Snardon, Pastor
Joshua Tabernacle Missionary Bapt. Church
426 South 15th Street
Louisville, KY 40203
(502) 583-7077
davidsnardon@gmail.com

Kevin Fields, Sr.
Senior Vice President & CCO
Louisville Central Community Centers, Inc.
1300 W. Muhammad Ali Blvd.
Louisville, KY 40203
(502) 583-8821
kfields@lccnews.org

Ms. Katrina Whitlock, Asst. Director
Louisville Metro Community Services
444 So. 5th Street
Louisville, KY 40202
Katrina.whitlock@louisvilleky.gov

Mr. Anthony Smith
Director of Safe & Healthy Neighborhoods
Office of the Mayor
City Hall
Louisville, KY 40202
Anthony.smith@louisvilleky.gov

Mr. Tony Peyton, Policy Director
Office of the Mayor
City Hall
Louisville, KY 40202
Tony.peyton@louisvilleky.gov

Steering Committee



Louisville, Kentucky: West of Ninth [TheBoulevard]

Rev. Keith Hackett, Pastor
Greater Salem Baptist Church
1009 W. Chestnut Street
Louisville, KY 40203
(502) 587-8869

Senator Gerald Neal
Kentucky State Senator
1718 W. Jefferson Street
Louisville, KY 40203

Mr. Rob Locke, Executive Director
Habitat for Humanity of Metro Louisville
1620 Bank Street
Louisville, KY 40203
(502) 637-6265

Mr. Ben Richmond, President
Louisville Urban League
1535 West Broadway
Louisville, KY 40203
(502) 561-6830

Ms. Johnetta Roberts
Executive Vice President
Community Ventures Corporation
811 So. 2nd Street
Louisville, KY 40203
(502) 566-6076

Steering Committee



Louisville, Kentucky: West of Ninth [TheBoulevard]

Proposed Project Budget

The Louisville Central Community Centers, Inc. (LCCC) will contribute work space, meeting space, and logistical support

ITEM	COST
Air Travel	\$5,000.00
Ground Transportation	\$700.00
Lodging	\$3,000.00
Meals	\$2,000.00
Printing and Supplies	\$1,000.00
Media Outreach	\$1,000.00
Miscellaneous	\$1,000.00
Total	\$13,700.00

Louisville Central Community Centers, Inc. (LCCC) has been able to secure funding of \$5,000 to support our SDAT grant application as well as in-kind support from Metro Louisville government, Metro Housing Authority of Louisville, Plymouth Urban Renewal Center, Councilman David Tandy, Louisville Urban League and Joshua Tabernacle Baptist Church. In addition to these secured contributions, additional support and fundraising options will be developed if awarded.

Louisville, Kentucky: West of Ninth [TheBoulevard]

North Carolina State University

Kofi Boone, Associate Professor and Associate Department Head
Department of Landscape Architecture
College of Design, NC State University
Campus Box 7701/200 Brooks Hall
Raleigh, NC 27695-7701
919-515-8349
kmboone@ncsu.edu

University of Kentucky

Ned Crankshaw, ASLA, Professor and Chair
Department of Landscape Architecture
College of Agriculture, University of Kentucky
S305 Agriculture Science Center
Lexington, KY 40506-0091
859-257-4691
ncranksh@uky.edu

Ryan Hargrove, Associate Professor
Department of Landscape Architecture
College of Agriculture, University of Kentucky
S305 Agriculture Science Center
Lexington, KY 40506-0091
859-257-3980
ryan.hargrove@uky.edu

Educational Partners



November 18, 2014

Erin Simmons, Director, Design Assistance
The American Institute of Architects
1735 New York Avenue, NW
Washington, DC 20006-5292

Dear Ms. Simmons;

I'm writing to give our enthusiastic support to the Louisville Central Community Centers, Inc. (LCCC) application for an AIA SDAT in West of Ninth, Louisville, KY. LCCC has worked tirelessly to develop a preliminary vision, the West of Ninth Visioning Project, to revitalize a once prominent area near downtown Louisville. The visioning project is evocative and reflects contemporary urban neighborhood revitalization issues; it pursues equitable and sustainable development that honors local heritage but also defines this part of the city as a contributor to broader downtown vitality. With potential short term redevelopment including a city sponsored major housing development, as well as the evolution of LCCC business incubation space, the area offers an exciting opportunity to work with national design and planning leaders to best leverage these two potential catalysts to advance the conceptual ideas introduced in the vision.

Although we are in a different state, we are excited to play a role in support of this effort. Our chief form of support is the academic infrastructure that enables Jared Kaelin (a current MLA student here, and a graduate of University of Kentucky where he contributed to the vision project) to continue his involvement in the project. I would like to participate in the process, especially in support of the SDAT team should this proposal be successful. Finally, NC State University's Department of Landscape Architecture has a commitment to serving communities, and this extends to communities outside of the state of North Carolina. The cultural and urban challenges present in West of Ninth are similar to issues we face in our home state.

I hope that the American Institute of Architects Design Assistance team gives the West of Ninth proposal an opportunity to benefit from the significant design and planning resources enabled through the AIA SDAT process.

Please feel free to contact me with any questions or comments about this letter and our involvement in this process.

My best,



Kofi Boone, Associate Professor and Associate Department Head
College of Design, NC State University
Campus Box 7701/Brooks Hall
Raleigh, NC, 27695-7701
919-515-8349 kmboone@ncsu.edu



UNIVERSITY
OF KENTUCKY
College of Agriculture

Ned M. Crankshaw, Professor and Chair

Department of Landscape Architecture
S305 Agriculture Science North
Lexington, KY 40546-0091
Phone: (859)257-4691
FAX: (859)257-2859
Email: ned.crankshaw@uky.edu

December 5, 2014

Erin Simmons, Director, Design Assistance
The American Institute of Architects
1735 New York Avenue, NW
Washington, DC 20006-5292

Dear Ms. Simmons,

We in the Department of Landscape Architecture are pleased to support the West of Ninth SDAT proposal. Our department is heavily engaged in service-learning and community engagement efforts, so this project would receive experienced support from our end. The faculty are well aware of the project and some of our faculty have worked on projects preliminary to this one in the West of Ninth district. We are excited about the opportunity to incorporate the project into the schedule for an urban design studio and can provide additional faculty support beyond the professor supervising the studio.

Best wishes in reviewing proposals and please contact me if I can provide more specific information that may be helpful.

With my regards,

Ned Crankshaw, ASLA
Professor and Chair
Department of Landscape Architecture

Louisville, Kentucky: West of Ninth [TheBoulevard]

We are happy to advise, Louisville has an incredible communication and media outreach capacity and LCCC's relationship with Dan Crutcher, Publisher of *Louisville Magazine*. We have identified several outlets in which to partner with in communicating our efforts with West of Ninth.

Newspapers:

The Courier-Journal
Louisville Eccentric Observer (LEO)
Velocity

TV Stations:

WAVE3 NBC
WHAS11 ABC
WLKY32 CBS
WBKI CW
Metro TV Louisville Metro Affairs
WDRB FOX

Radio Stations:

WFPL public radio
WFPK
WHAS

Electronic:

INSIDER Louisville

LCCC has significant networks working with the city and organizations across Louisville in order to maximize this projects efforts.

Here are links to previously released news about the initial momentum behind West of Ninth's vision:

<http://www.wlky.com/news/local-news/louisville-news/some-louisville-leaders-present-vision-to-revitalize-west-louisville/22852266>

<http://www.courier-journal.com/story/opinion/contributors/2014/03/17/samuel-watkins-west-louisville-here-we-go-again/6531911/>

<http://www.whas11.com/story/news/local/community/2014/10/16/15838054/>

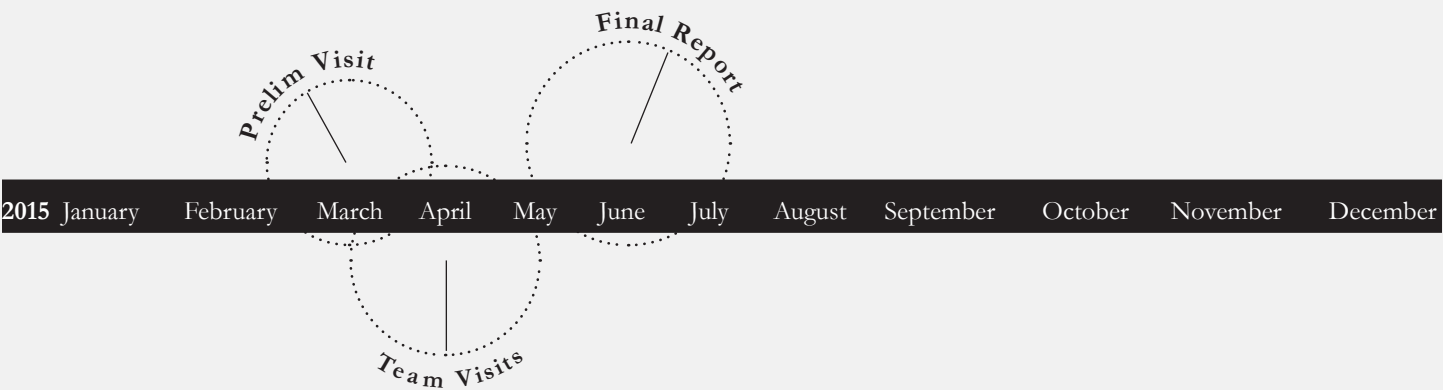
<http://www.wave3.com/story/23907188/urban-renewal-project-to-reconnect-west-louisville-to-downtown>

<http://insiderlouisville.com/metro/communities/vision-west-louisville/>

Louisville, Kentucky: West of Ninth [TheBoulevard]

March 2015
April 2015
June 2015 Follow

Preliminary Assessment Visit
(first two weeks) SDAT Team Visit
Follow-up to the AIA SDAT meeting and final report



SDAT Project Time-line

Louisville, Kentucky: West of Ninth [TheBoulevard]

Major Partnerships:

Louisville Metro Housing Authority
Office of Senator Gerald Neal
Louisville Urban League
Joshua Tabernacle Missionary Baptist Church

Letters of Support included from:

Marty Merkel, AIA, LEED AP, President Elect Central Kentucky Chapter/AIA
Greg Fischer, Mayor of Louisville
Sam Watkins, President and CEO, Louisville Central Community Centers, Inc.
Tim Barry, Executive Director, Louisville Metro Housing Authority
Markham A. French, Executive Director, Plymouth Community Renewal Center
Christie J. McCravy, Interim Board Chair, Kentucky Center for African American Heritage

AIA Central Kentucky

December 4, 2014

Center for Communities by Design
The American Institute of Architects
1735 New York Ave, NW
Washington, DC 20006-5292

Dear SDAT Application Review Committee:

I am writing this letter to express the strong level of support that AIA Central Kentucky Chapter has for the application of the potential SDAT project "West of Ninth". The West of Ninth neighborhood of Louisville would greatly benefit from the knowledge and expertise that could be provided by an AIA Sustainable Design Assessment Team. The team assembled by Sam Watkins and the Louisville Central Communities Centers certainly will be a benefit to the West of Ninth community, as well as the larger City of Louisville as a whole.

The community surrounding West of Ninth is in desperate need of sustainable design of both built and natural spaces. While the community has a rich cultural history and significant historical buildings, it is imperative that a sustainable plan be put into place that encourages sustainable redevelopment. The civic community and local developers have already targeted this community for significant redevelopment, so an SDAT project at this time would be greatly beneficial in shaping the conversation regarding sustainable development, prior to any other significant plans being put into place.

I am very excited about the opportunities that an AIA SDAT would provide for the West of Ninth community, and excited about the potential role AIA Central Kentucky can play to help ensure this project's success. The AIA Central Kentucky chapter wholeheartedly endorses and supports the West of Ninth SDAT application. Thank you for your consideration of this very worthy endeavor.

Sincerely,



Martin A. Merkel
2015 Chapter President
AIA Central Kentucky



LOUISVILLE FORWARD
LOUISVILLE, KENTUCKY

GREG FISCHER
MAYOR

MARY ELLEN WIEDERWOHL
CHIEF

November 19, 2014

Erin Simmons, Director, Design Assistance
The American Institute of Architects
1735 New York Avenue, NW
Washington, DC 20006-5292

Re: Local Government Support for a Sustainable Design Assessment Team Application for the Russell Neighborhood in West Louisville

Dear Mr. Simmons:

As Mayor of Louisville Metro, I am pleased to support the Louisville Central Community Center's (LCCC) application for the American Institute of Architects' 2015 Sustainable Design Assessment Teams (SDAT) community assistance program. This team of volunteer professionals will be a great asset in the development of a comprehensive and sustainable plan for the transformation of West Louisville, with a particular emphasis on the redevelopment of the Russell neighborhood and the Beecher Terrace public housing site.

My vision of a vibrant downtown Louisville depends on a revitalized West Louisville and Russell neighborhood. Your talented, multi-disciplinary team of AIA professionals can help supply West Louisville stakeholders and decision makers, including staff members from twenty Metro Government departments, with an objective assessment of the future of Russell, and the strategies our city needs to implement and sustain our transformation plans.

I am proud that my staff has worked so closely with LCCC and other local partners to prepare this SDAT application, and offer their future assistance in carrying out planning activities that will ensure the success of the SDAT grant and our goals for West Louisville and Russell. I look forward to an announcement from the AIA that we have been successful in our efforts.

Sincerely,

Greg Fischer
Mayor



Louisville Central Community Centers, Inc.

Building A Wealth of Pride Through Opportunity

November 7, 2014

Erin Simmons, Director, Design Assistance
The American Institute of Architects
1735 New York Avenue, NW
Washington, DC 20006-5292

Dear Director Simmons,

Louisville Central Community Centers, Inc. (LCCC) is pleased to join Mr. Jared Kaelin and Dr. Kofi Boone of North Carolina State University in submitting a Sustainable Design Assessment Team (SDAT) Program application to the American Institute of Architects.

The West of Ninth Visioning Project represents the hopes and aspirations of west Louisville residents and other stakeholders after decades of experiencing significant loss of jobs and economic vitality. With the help of the American Institute of Architects, we will be able to advance our capacity to engage a broad representation of individuals and generate support for a transformational change. This change will include targeted investment and strategies that increase economic activity, expand educational opportunities, reduce violent crime, improve housing conditions, and enhance health and wellness.

To this end, LCCC is committed to advancing self-reliant practices that will provide great promise for the people who reside in west Louisville. Our sixty-six (66) year history has led to us investing more in west Louisville. For example, we serve over 1,400 families with an array of services including early childhood education, youth development, adult education and workforce development services. All of these services are tied to the goals of helping young children succeed in kindergarten, helping school-age youth reach their highest potential and helping family leaders achieve economic stability.

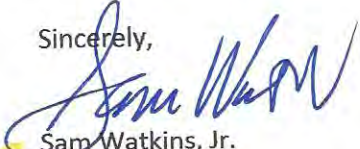
We recently capitalized an investment of over \$11 million toward a job creation center called Old Walnut Street Development in west Louisville. This 110 square foot development features a business incubator and other related space that is designed to attract job creating businesses to west Louisville.

LCCC plans to support the SDAT grant by:

- Provide meeting space for practitioners and community residents to participate in all aspects of the SDAT grant.
- Provide staff support and volunteers to carry out designated tasks that ensure the success of the SDAT grant.
- Help raise awareness and funds to support the SDAT grant.

We are excited about the outcomes that would be achieved with the help of a SDAT grant. For this reason, I strongly encourage the American Institute of Architects to support our application and our community revitalization efforts in west Louisville.

Sincerely,


Sam Watkins, Jr.
President & CEO



www.lcccnews.org

502.583.8821 • 502.583.8824 fax
1300 W. Muhammad Ali Blvd., Louisville, KY 40203





November 17, 2014

Erin Simmons, Director, Design Assistance
The American Institute of Architects
1735 New York Avenue, NW
Washington, DC 20006-5292


Dear Director Simmons:

As Executive Director of the Louisville Metro Housing Authority, I am pleased to offer our full support of the Louisville Central Community Center's (LCCC) application for the American Institute of Architects' (AIA) 2015 Sustainable Design Assessment Teams (SDAT) community assistance program. The expertise offered through SDAT's team of volunteer professionals will be an outstanding addition to the planning efforts recently launched for West Louisville. LMHA looks forward to the SDAT team working closely with the members of our Choice Neighborhoods Coordinating Committee and Task forces as we move forward to develop a Transformation Plan for the Russell neighborhood in West Louisville. A key element of this plan will be developing sustainable strategies and funding streams to raze the severely distressed 768-unit Beecher Terrace public housing complex, and recreate in its place, a safe and sustainable mixed-income, mixed-use community. We envision this new community building on the momentum of concurrent redevelopment activities, as well as catalyzing future investments in Russell and other nearby West Louisville neighborhoods.

LMHA has made application to HUD and is hoping to receive word sometime in January 2015 of the award of a \$500,000 Choice Neighborhoods (CNI) Planning grant. Those funds could be leveraged with SDAT's expertise to result in a vision and framework for the sustainable transformation of the entire Russell neighborhood. Our planning process and activities will continue however even without CNI funds. Towards that end, LMHA has hired a nationally renowned planning firm, EJP Consulting Group, and committed up to \$50,000 for the technical assistance they are providing to our CNI planning team.

The Authority is also able to commit meeting space at the Beecher Terrace Community Center for the SDAT team to work with our CNI team members, as well as community residents and stakeholders as we move forward in our planning process. Our staff is also available to carry out designated tasks to ensure the success of the SDAT grant. LMHA enjoys a strong working relationship with the LCCC, who is a key player on our CNI team. We applaud their leadership in pursuing the SDAT community assistance program, and look forward to working with the SDAT team to help us realize our goals for the Russell neighborhood and West Louisville.

Sincerely,


Tim Barry
Executive Director



November 21, 2014

Erin Simmons, Director, Design Assistance
The American Institute of Architects
1735 New York Avenue, NW
Washington, DC 20006-5292

Dear Director Simmons,
Plymouth Community Renewal Center (Plymouth) is pleased to support Louisville Central Community Centers' Sustainable Design Assessment Team (SDAT) Program application to the American Institute of Architects.

The West of Ninth Visioning Project represents the hopes and aspirations of west Louisville residents and other stakeholders after decades of experiencing significant loss of jobs and economic vitality. With the help of the American Institute of Architects, we will be able to advance our capacity to engage a broad representation of individuals and generate support for a transformational change. This change will include targeted investment and strategies that increase economic activity, expand educational opportunities, reduce violent crime, improve housing conditions, and enhance health and wellness.

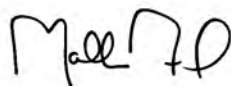
Plymouth is committed to expanding educational opportunities and providing programs and services to prepare residents of west Louisville for the transformative changes that coming down the pike.

As a supporter of the application, Plymouth will support the SDAT grant as follows:

- Provide meeting space for practitioners and community residents to participate in all aspects of the SDAT grant; and
- Provide staff support and volunteers to carry out designated tasks that ensure the success of the SDAT grant.

We are excited about the outcomes that would be achieved with the help of a SDAT grant. For this reason, I strongly encourage the American Institute of Architects to support the Louisville Central Community Centers grant application.

Respectfully,



Markham A. French
Executive Director



December 3, 2014

Erin Simmons, Director, Design Assistance
The American Institute of Architects
1735 New York Avenue, NW
Washington, DC 20006-5292

Dear Director Simmons:

The African American Heritage Foundation (d/b/a Kentucky Center for African American Heritage-KCAAH) is pleased to support Louisville Central Community Centers' Sustainable Design Assessment Team (SDAT) Program application to the American Institute of Architects.

The West of Ninth Visioning Project represents the hopes and aspirations of west Louisville residents and other stakeholders after decades of experiencing significant loss of jobs and economic vitality. With the help of the American Institute of Architects, we will be able to advance our capacity to engage a broad representation of individuals and generate support for a transformational change. This change will include targeted investment and strategies that increase economic activity, expand educational opportunities, reduce violent crime, improve housing conditions, and enhance health and wellness.

KCAAH is committed to being accessible and serving those who reside in west Louisville, particularly the Russell neighborhood.

As a supporter of the application, KCAAH will support the SDAT grant by

- Provide meeting space for practitioners and community residents to participate in all aspects of the SDAT grant
- Co-sponsor educational activities and cultural events for area residents
- Help raise awareness to support the SDAT grant

We are excited about the outcomes that would be achieved with the help of a SDAT grant. For this reason, I strongly encourage the American Institute of Architects to support the Louisville Central Community Centers grant application.

Sincerely,


Christie J. McCravy
Interim Board Chair

file

Federal Tax I.D. - 611279400 – KY Revenue I.D. - B20570
1701 West Muhammad Ali Boulevard * Louisville, Kentucky 40203
(502) 583-4100 * Fax: (502) 583-4112 * www.kcaah.org

Louisville, Kentucky: West of Ninth [TheBoulevard]

The following four images show selected areas across Louisville. One of our study area and the other three from the east end (areas included in the demographics from the community description section of this application). The colored circles locate amenities within the corridors (food, shopping, services). Information from Google Earth was used to locate these amenities. As you can see, the study area has significantly less availability of necessary amenities.

Louisville, Kentucky: West of Ninth [TheBoulevard]



Supplemental Documents

Louisville, Kentucky: West of Ninth [TheBoulevard]

- Food and Drink
- Shops
- Galleries and Services

Louisville, Kentucky: Market Street [NULU District]



Louisville, Kentucky: West of Ninth [TheBoulevard]

- Food and Drink

Shops

Galleries and Services
- Green Space

Louisville, Kentucky: Baxter Avenue



Louisville, Kentucky: West of Ninth [TheBoulevard]

- Food and Drink

● Shops

● Galleries and Services
-
- Green Space

Louisville, Kentucky: Bardstown Road



Louisville, Kentucky: West of Ninth [TheBoulevard]

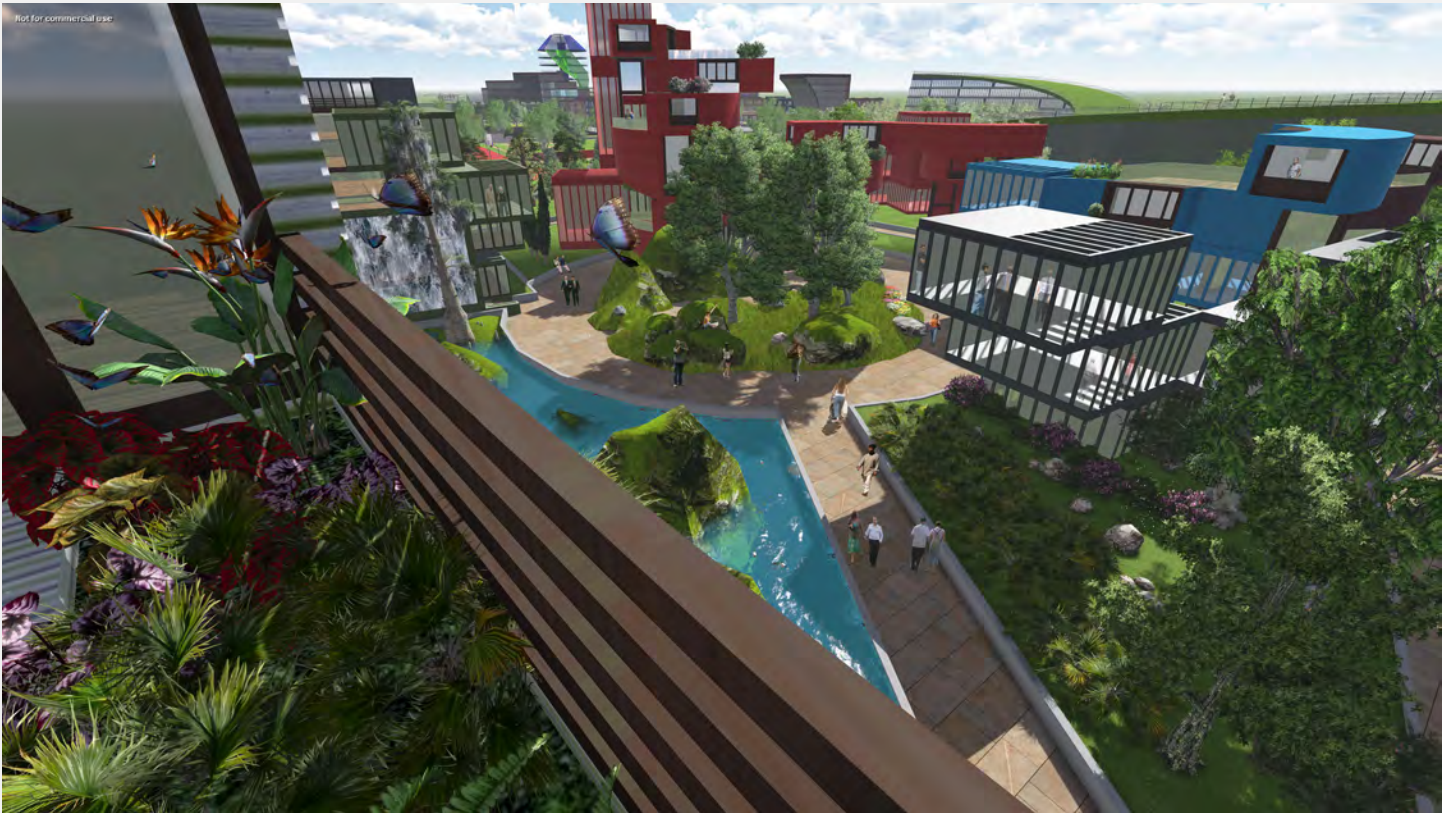
The images were the product of a visioning process led by LCCC, and with technical assistance from faculty and students from the University of Kentucky's Landscape Architecture Program. They are visioning documents and were generated for community discussion purposes.

Additionally, a video was produced to extend the reach of the West of Ninth project. That video can be viewed at:

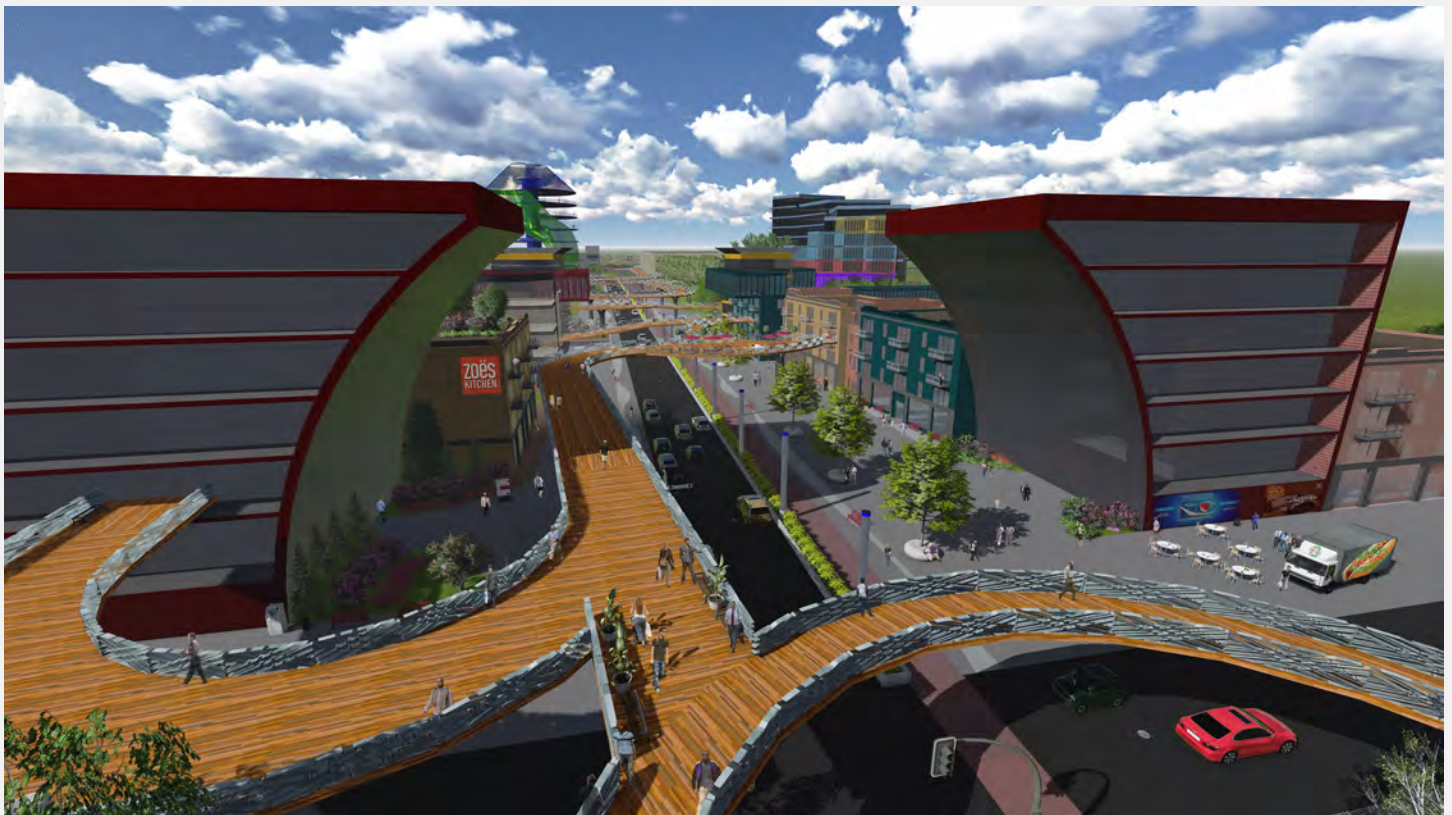
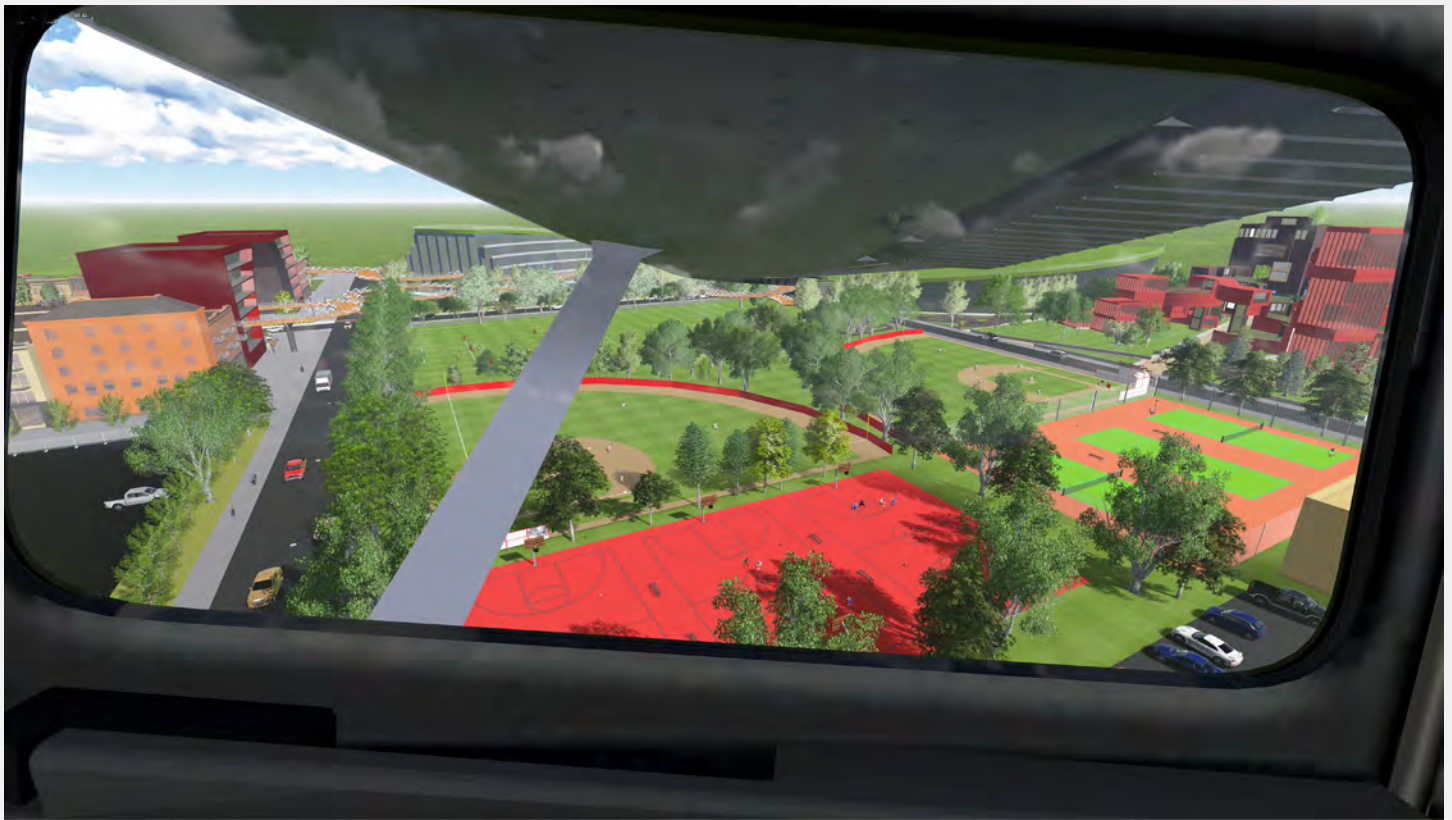
https://www.youtube.com/watch?v=0c_gKlvyNs0





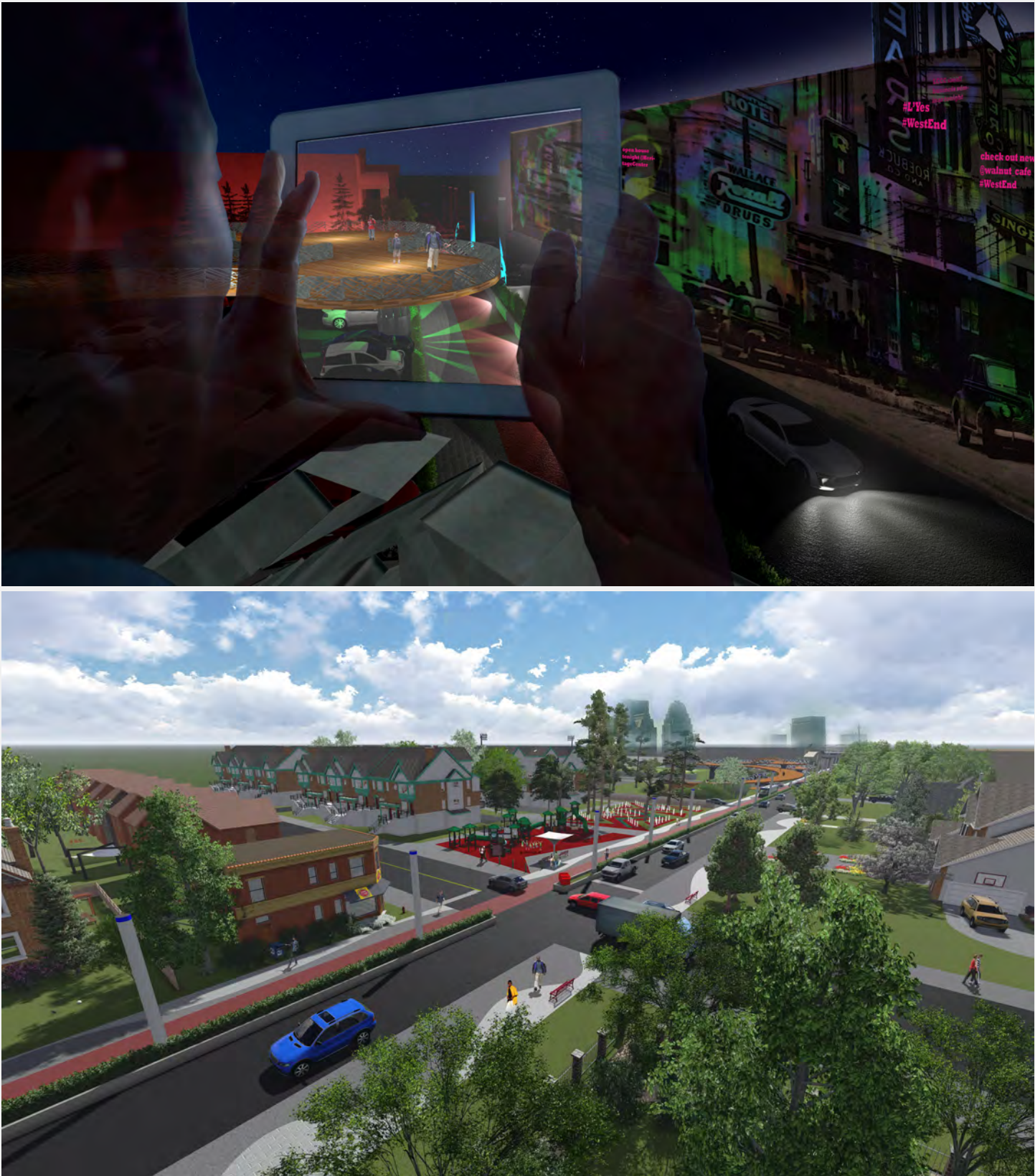


Louisville, Kentucky: West of Ninth [TheBoulevard]



Supplemental Documents

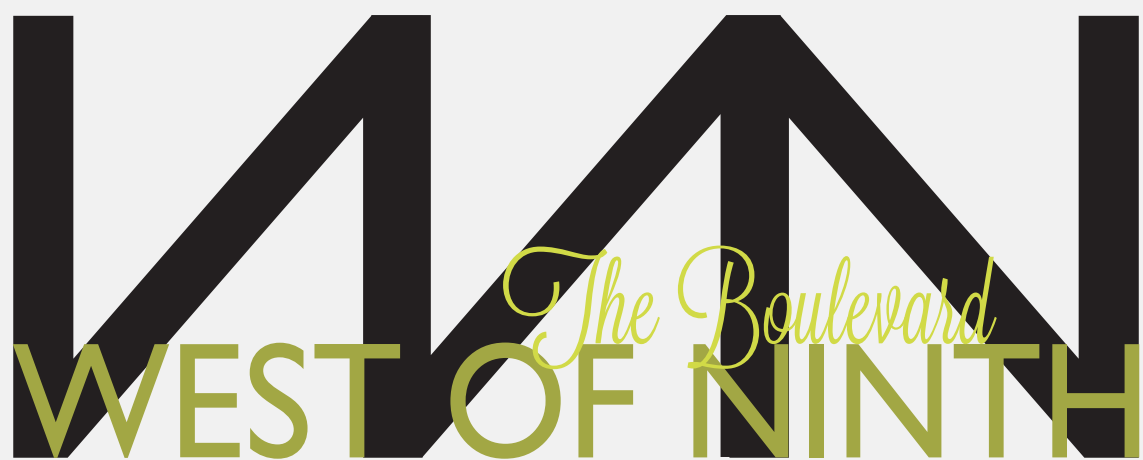












Thank You

